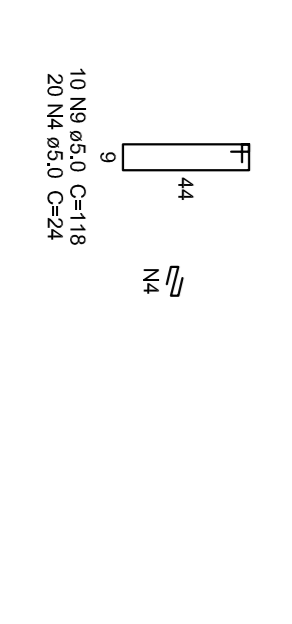
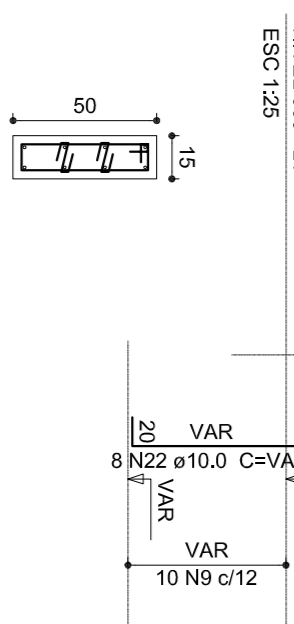
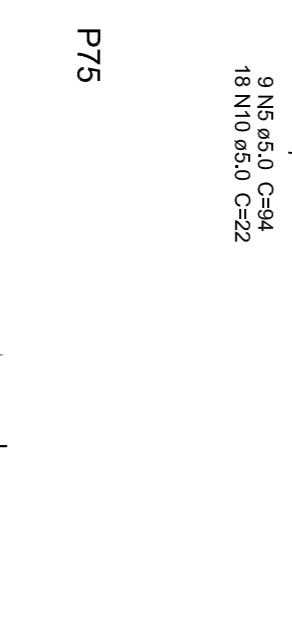
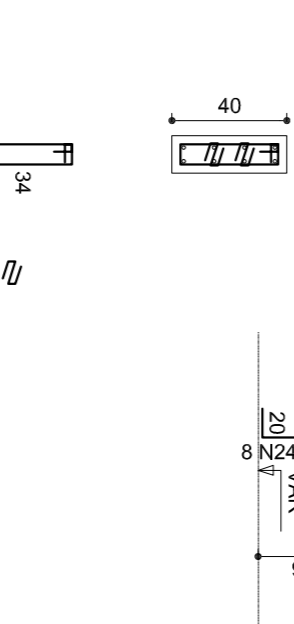
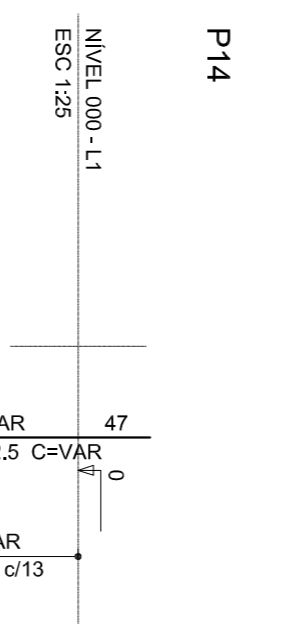
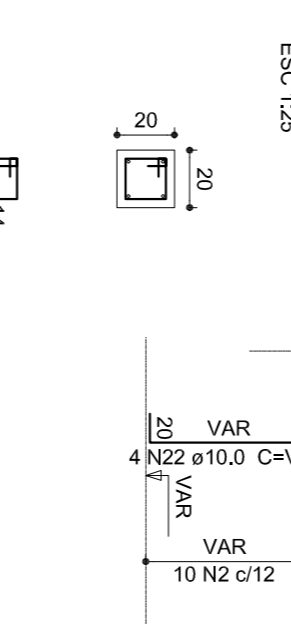
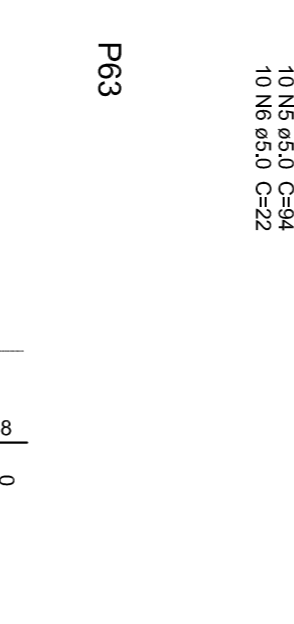
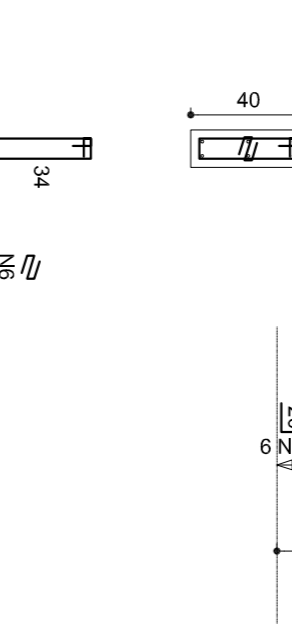
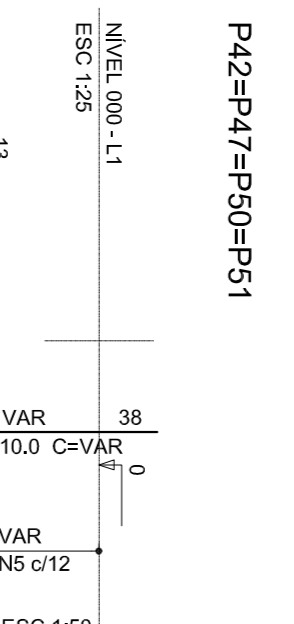
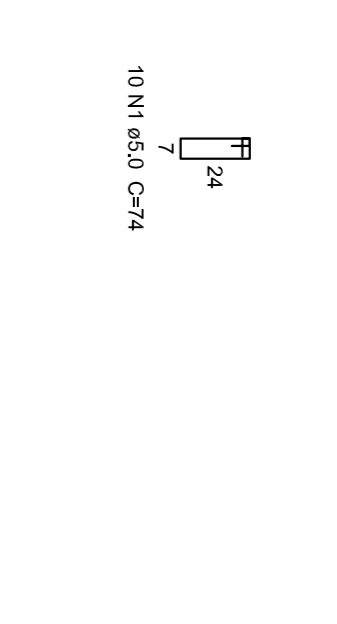
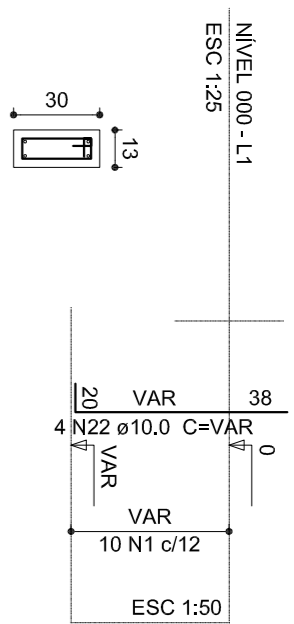
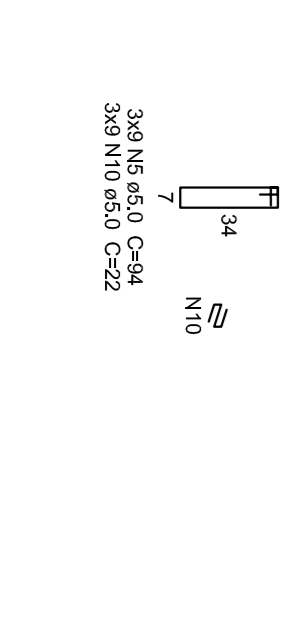
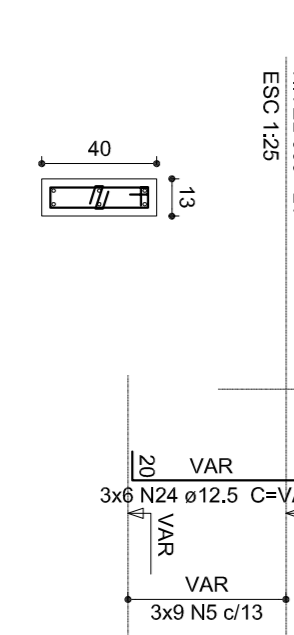
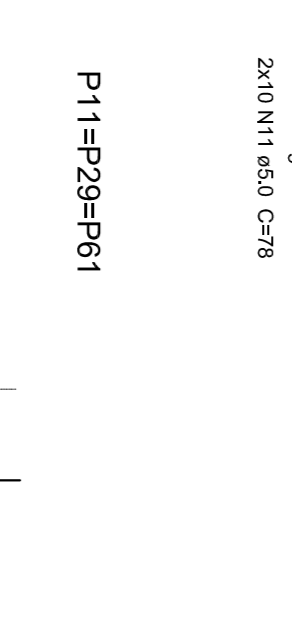
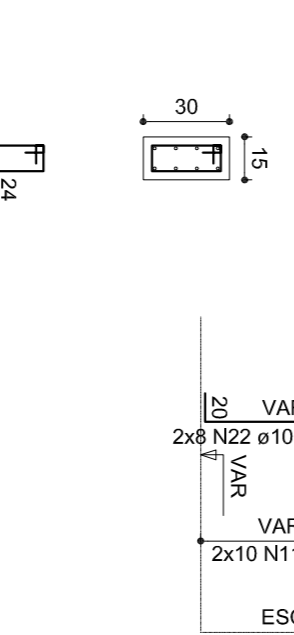
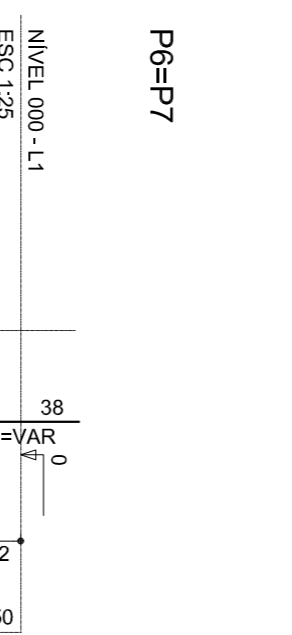
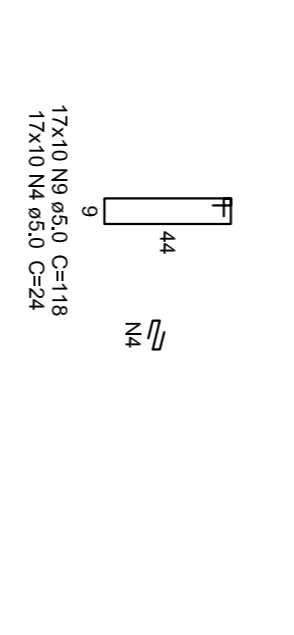
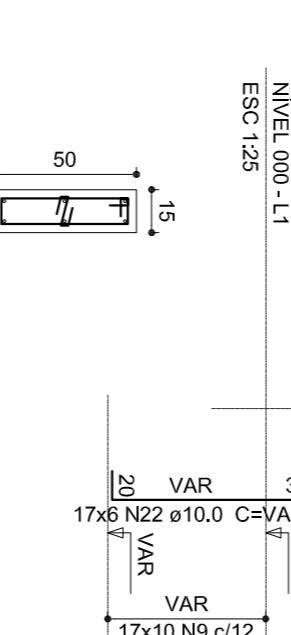
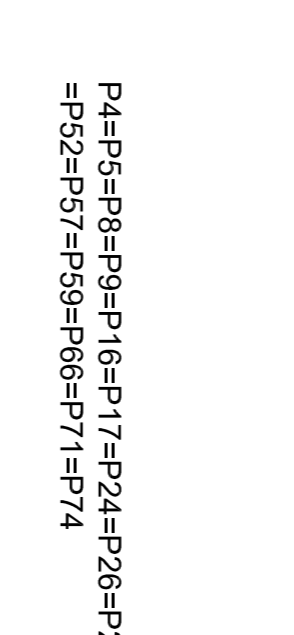
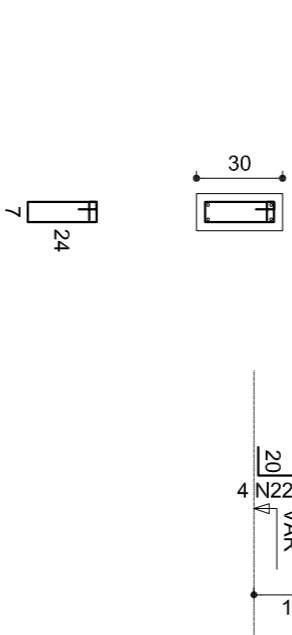
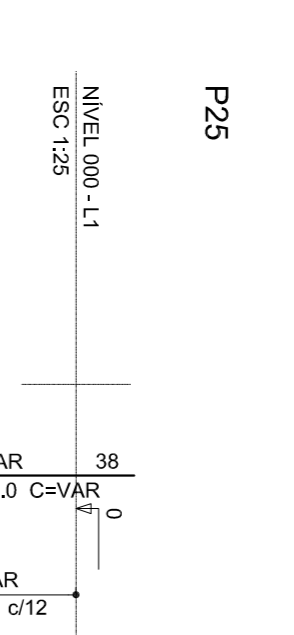
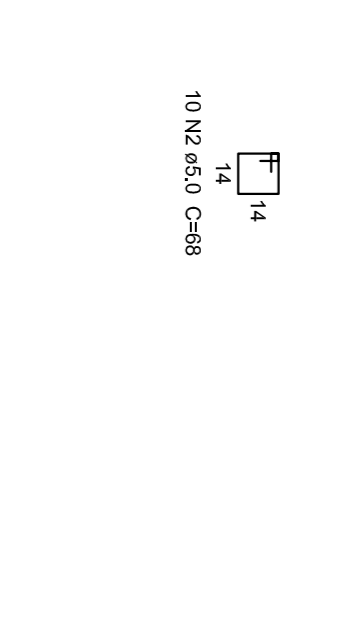
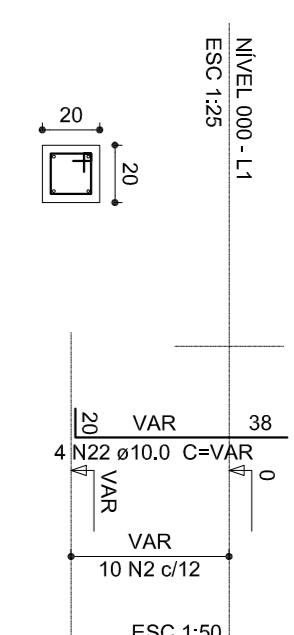


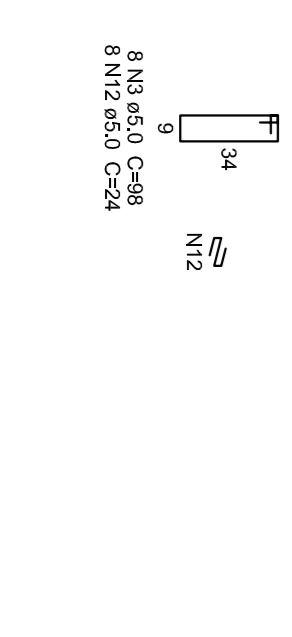
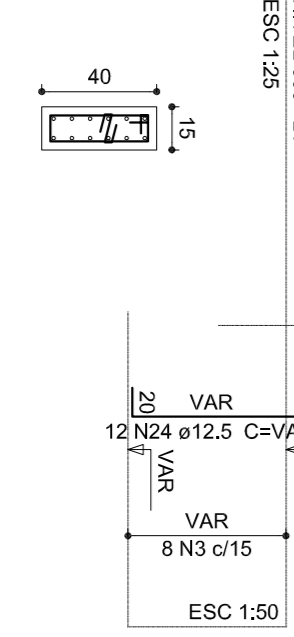
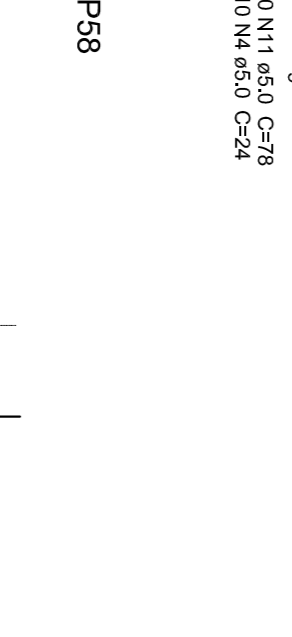
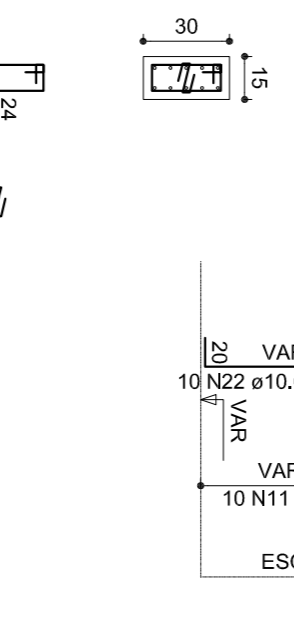
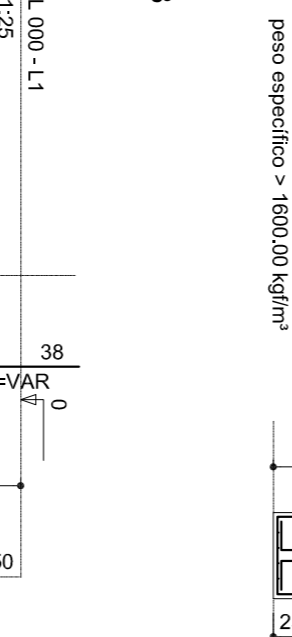
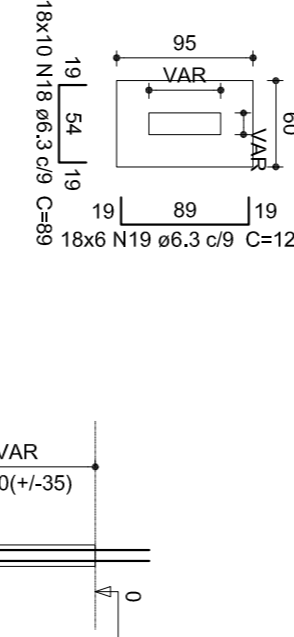
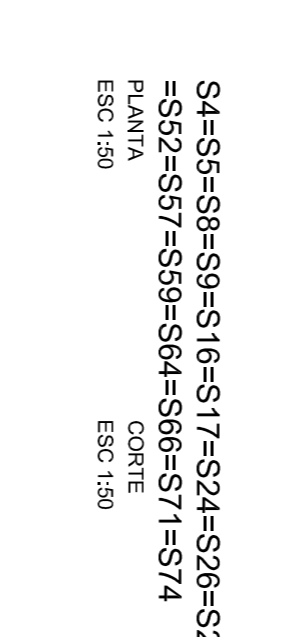
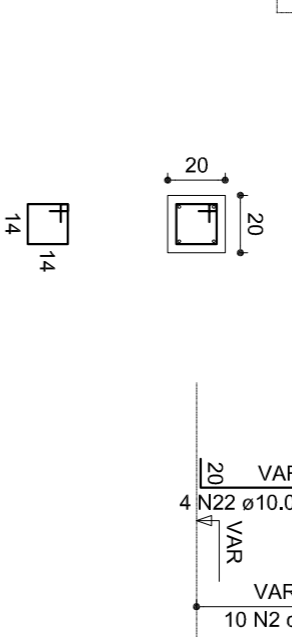
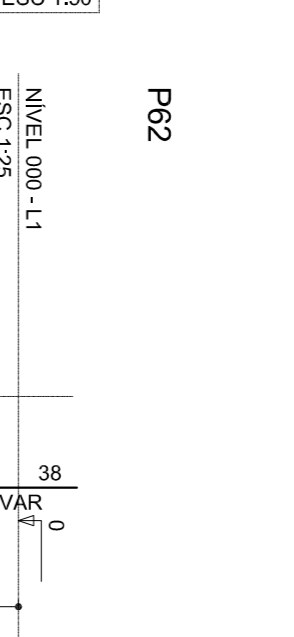
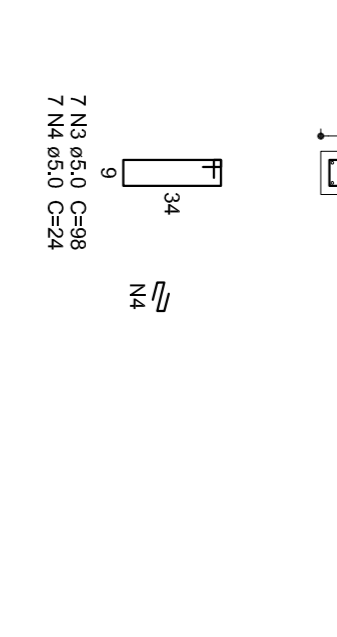
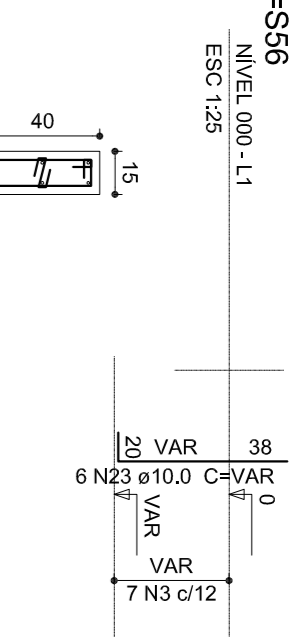
P48=P49=067=P68=P69=P70



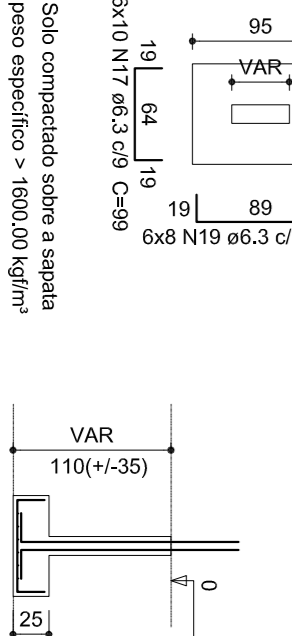
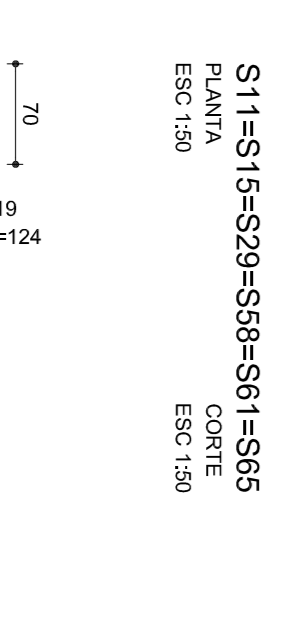
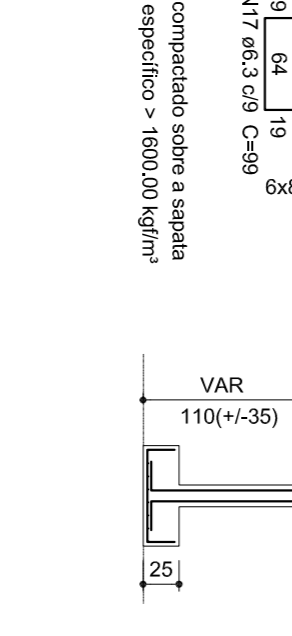
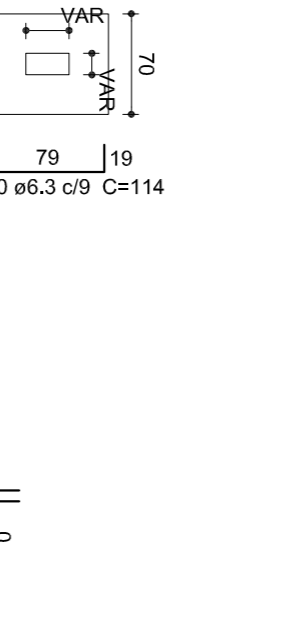
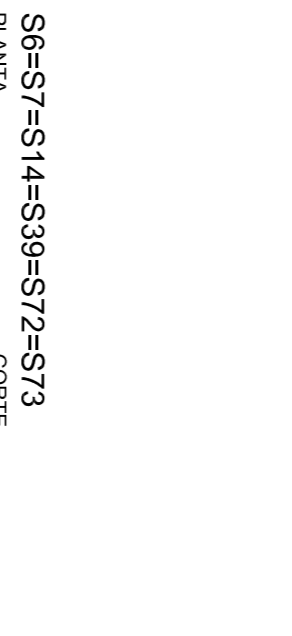
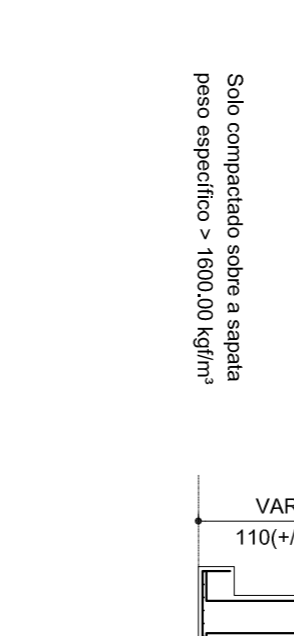
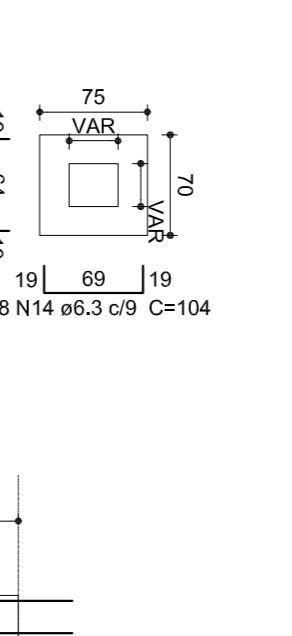
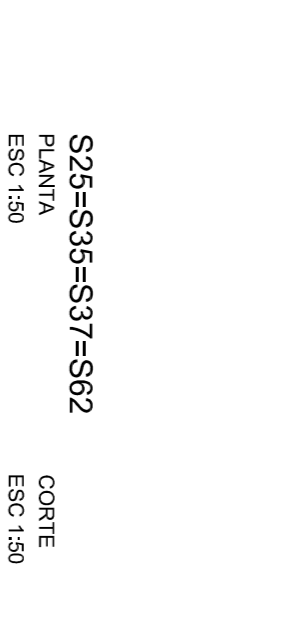
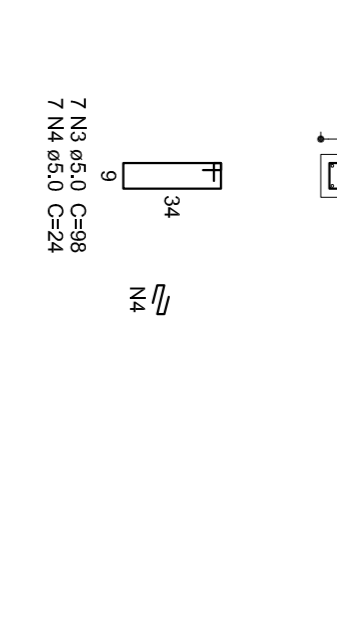
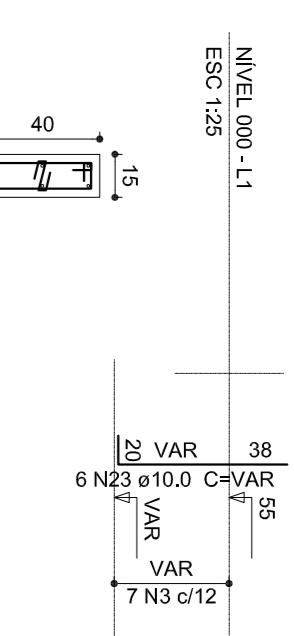
P12=P13=P20=P21=P30=P31=P40=P41=P55=P56



P43



P45



Relação do aço

ACO	N	DIAM	QUANT	UNIT	C:TOTAL
CA60	1	5,0	120	68	8160
CA60	2	5,0	22	98	2156
CA60	3	5,0	214	24	5136
CA60	4	5,0	116	24	2904
CA60	5	5,0	20	116	2320
CA60	6	5,0	20	39	780
CA60	7	5,0	118	24	2832
CA60	8	5,0	180	84	8736
CA60	9	5,0	102	84	8568
CA60	10	5,0	16	104	1664
CA60	11	5,0	102	84	8568
CA60	12	5,0	152	94	14208
CA60	13	6,3	17	63	14454
CA60	14	6,3	146	99	16020
CA60	15	6,3	180	89	19344
CA60	16	6,3	156	124	19344
CA60	17	6,3	146	99	14454
CA60	18	6,3	146	99	14454
CA60	19	6,3	156	124	19344
CA60	20	6,3	146	99	14454
CA60	21	6,3	146	99	14454
CA60	22	6,3	146	99	14454
CA60	23	6,3	146	99	14454
CA60	24	6,3	146	99	14454

ACO	DIAM	C:TOTAL	PESO + 10%
CA60	5,0	1714	2463
CA60	12,5	487,1	3,811
CA60	5,0	618,8	105,1
CA60	6,3	105,1	

Volume de concreto (C-20) = 11,2 m³
Área do forro = 103,4 m²



PROJETO PADRÃO - FND E

PROPRIETÁRIO: FUNDO NACIONAL DE DESENVOLVIMENTO DA EDUCAÇÃO - FND E

ENÉREGO:

MUNICÍPIO - UF:

PROPRIETÁRIO

RESP. TÉCNICO

AUTOR DO PROJETO

D/LFO

RA

PROJETO DE ESTRUTURA

OPÇÃO 2: FUNDAÇÃO SAPATA SAPATAS

PROGRAMA PROINFÂNCIA - PROJETO TIPO 2

COGEST - Coordenadora Geral de Infraestrutura Educacional

ESCALA

INDICAÇÃO

PRONIMA

PROJETO BÁSICO

CONCEPÇÃO	OPÇÃO 2: FUNDAÇÃO SAPATA SAPATAS
REVISÃO	13/14